

HOW TO GUIDE: HANA SERVER MAINTENANCE



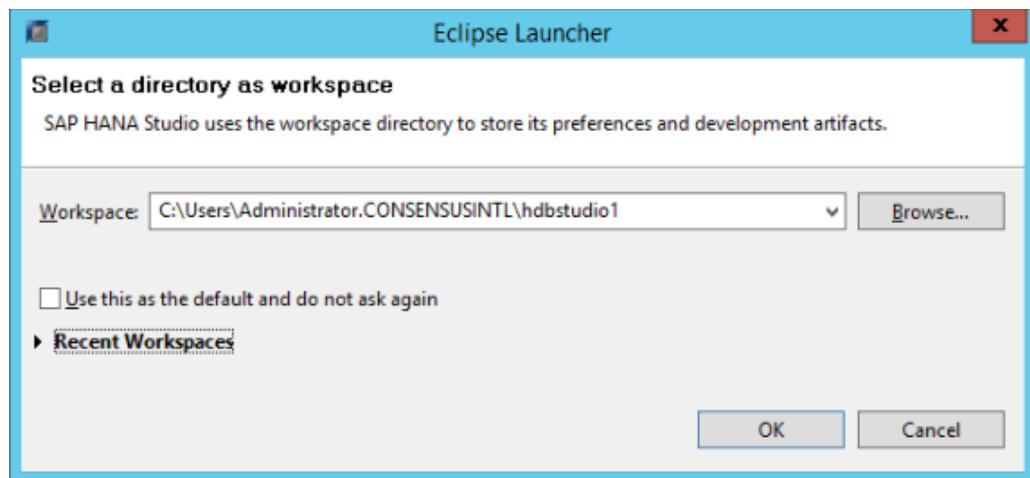
CONTENTS

- 1. Working with Hana Studio..... 2
- 2. Backup the instance 5
- 3. Clean the instance backups (weekly) 7
- 4. Clean the schema exports (every 6 months) 9
- 5. Turning off your server..... 9
- 6. Restarting your server 10

HOW TO GUIDE: HANA SERVER MAINTENANCE

1. WORKING WITH HANA STUDIO

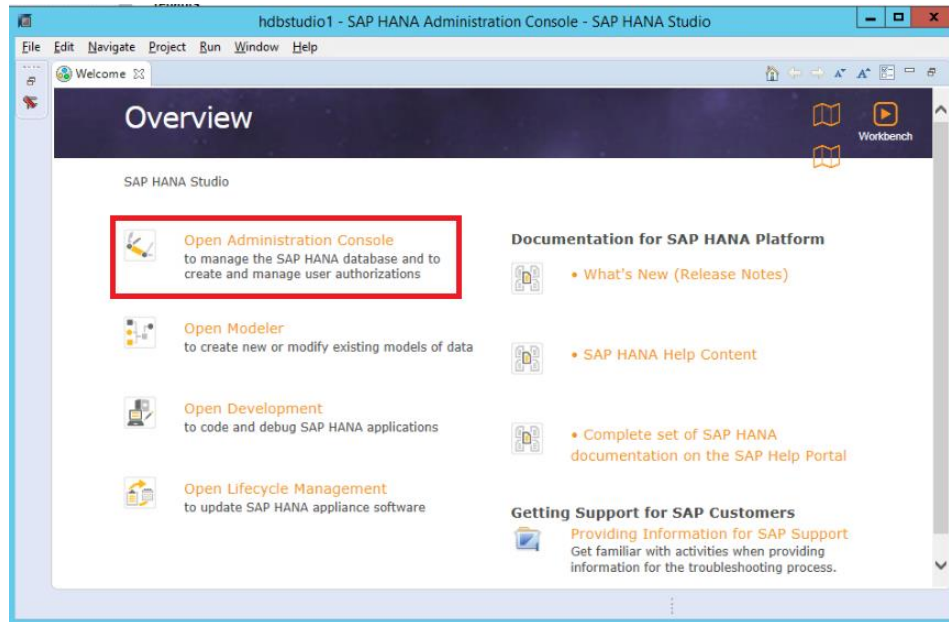
- Go to the windows application server (IP/server name located on the Installation document) and open Hana Studio.
- The first screen will ask where you would like to save your workspace configuration. You can accept the location suggested or select the place you prefer it to be saved:



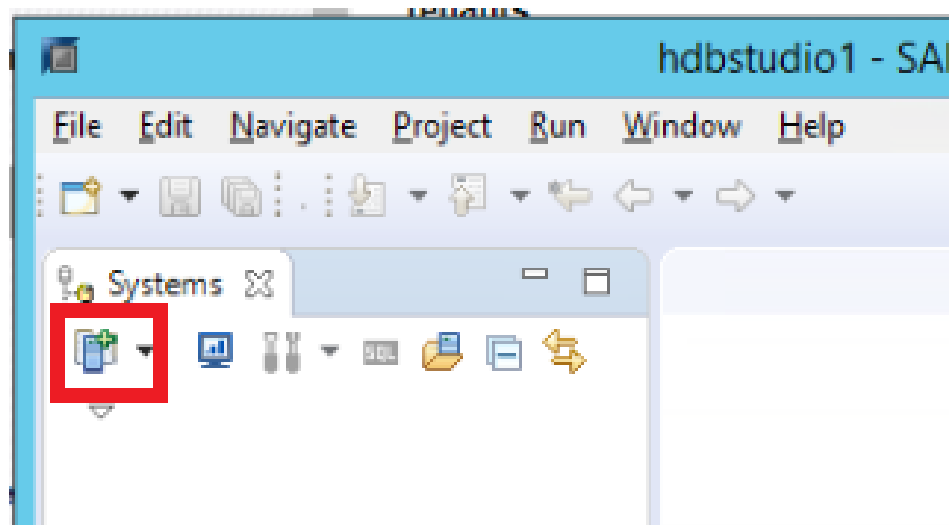
- The first time the Hana studio workspace is opened, the user must configure the connection.

HOW TO GUIDE: HANA SERVER MAINTENANCE

- In the main screen select Open Administration Console:

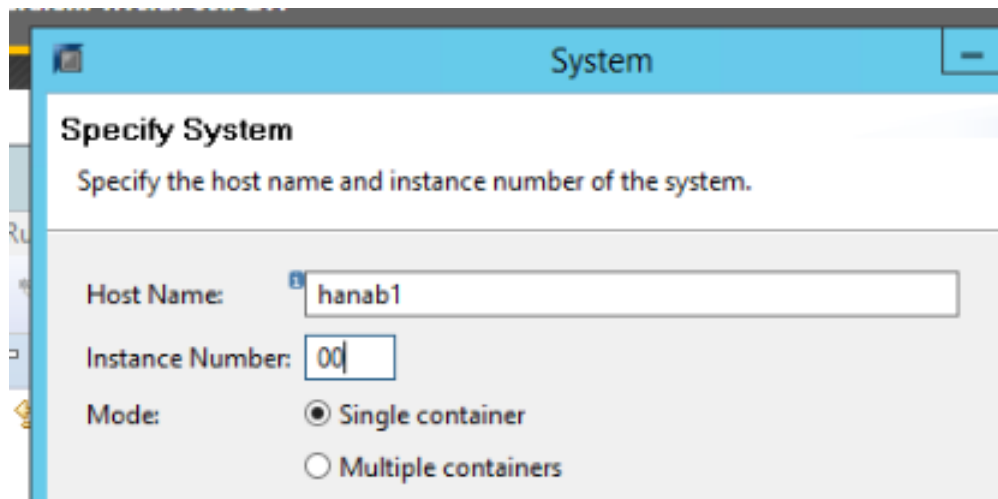


- On the next screen add the system, as shown in the image below:

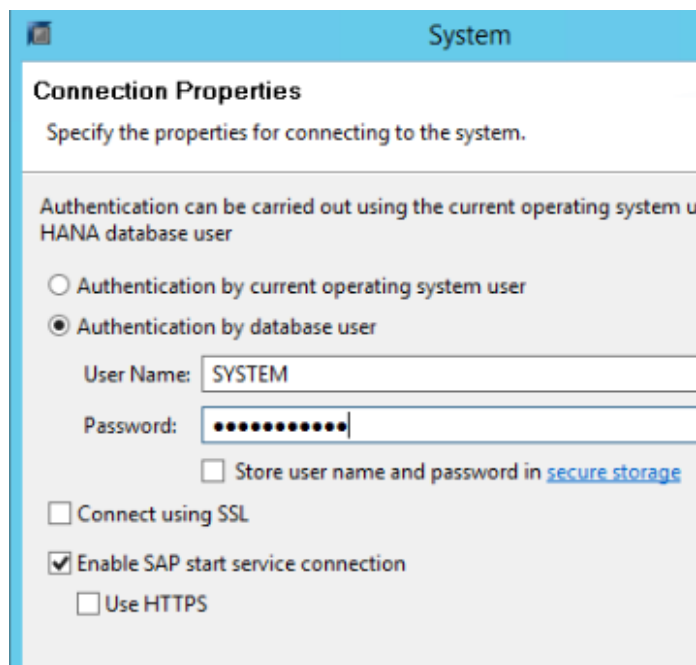


HOW TO GUIDE: HANA SERVER MAINTENANCE

- Now enter the IP address or name of your Hana server (located on the Installation document) and for the “Instance Number” enter 00 and press next:



- Enter the database username and password (located on the Installation document) and then select **Finish**:



2. BACKUP THE INSTANCE

- Remember that by default, your system is configured to run a daily backup after midnight.
- If you wish to execute a backup on a specific time, open Hana Studio. The instructions are in Step 1 of this manual.
- On the top left corner of your screen you will see **Backup** make a right-click and select **Back-Up System**:



- Now you will have to give a unique name to the backup:



HOW TO GUIDE: HANA SERVER MAINTENANCE

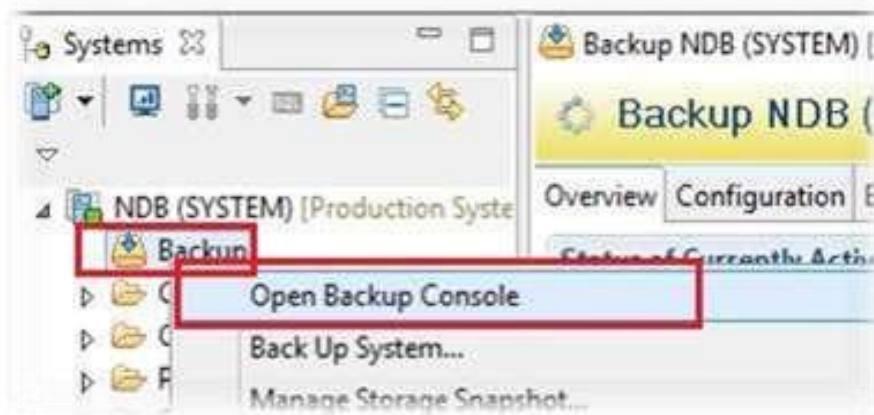
- Select **Next** and then **Finish**.
- Wait until the following screen appears:



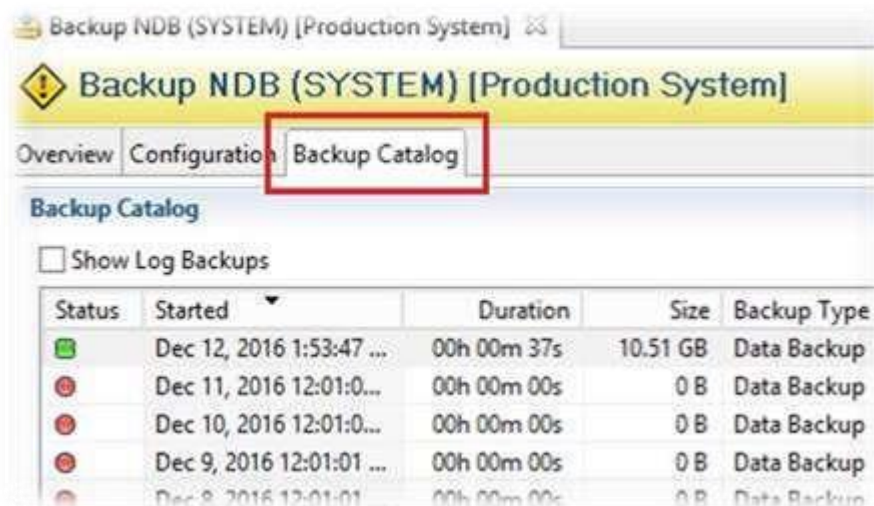
3. CLEAN THE INSTANCE BACKUPS (WEEKLY)

- On Hana Studio with SYSTEM USER (credentials on Step 1):

Right click on **Backup** -> **Open Backup Console**:



- Go to the tab **Backup Catalog**:



HOW TO GUIDE: HANA SERVER MAINTENANCE

- Select from what date you would like to delete the backup and make a right click and select **Delete Older Backups**:



- ⌚ Wait until it finishes doing “Fetch Backups” (it can take some time) when it finishes the following screen will open:



- Please, select **Catalog and Backup Location** and **File System**. Then press **Finish**.

4. CLEAN THE SCHEMA EXPORTS (EVERY 6 MONTHS)

- First, enter on your Linux server using remote desktop (IP/server name and credentials located on the Installation document).
- Then open the File Browser and locate:
/hana/shared/backup_service/backups/<your server name/ip>_30015/NDB/<databasename>
- Delete all the database older than 7 days. By default, the system is configured to have one export every day for each production database.



With Linux, it is very important that the person completing the shutdown knows exactly what they are doing when using a command line

5. TURNING OFF YOUR SERVER

- Very important: Always run an instance backup before turning off your server. The instructions are in Step 2 of this manual.
- Enter the Hana server (IP/server name is located on the Installation document).
- Now open the gnome-terminal.
- Turn off the Hana services by executing the following commands:
 1. /etc/init.d/sapb1servertools stop
 2. su - ndbadm
 3. ./HDB stop
- Turn off the server by executing the following command:
 - Shutdown -h now



With Linux, it is very important that the person completing the shutdown knows exactly what they are doing when using a command line

6. RESTARTING YOUR SERVER

- Very important: Always run an instance backup before restarting the server. The instructions are in Step 2 of this manual.
- Now enter the Hana server (IP/server name is located on the Installation document).
- Open the gnome-terminal.
- Turn of the Hana services by executing the following commands:
 1. `/etc/init.d/sapb1servertools stop`
 2. `su - ndbadm`
 3. `./HDB stop`
- Restart the server by executing the following command on a new command line:
 - Reboot
- After the server starts it is possible that the Hana services did not turn on, the following services need to be running for SAP to work:
 1. HDB (Hana instance): To start the service run the following:
 - a. `su – ndbadm`
 - b. `./HDB start`
 2. SLD: To start this service, open a new terminal window and run the following:
 - a. `/etc/init.d/sapb1servertools start`



With Linux, it is very important that the person completing the shutdown knows exactly what they are doing when using a command line