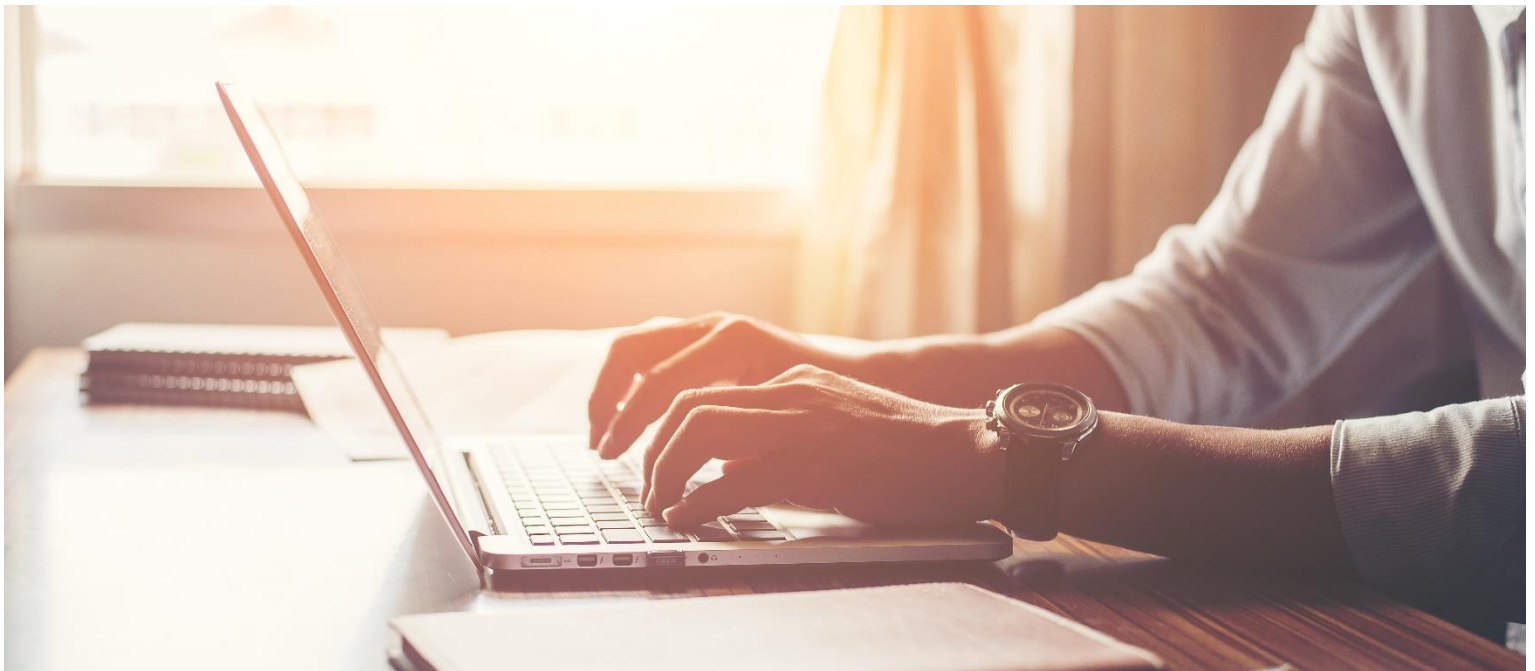


CONS[€]NSUS | SAP[®] Business One



IMPORTING A NEW LICENSE FILE INTO SAP BUSINESS ONE

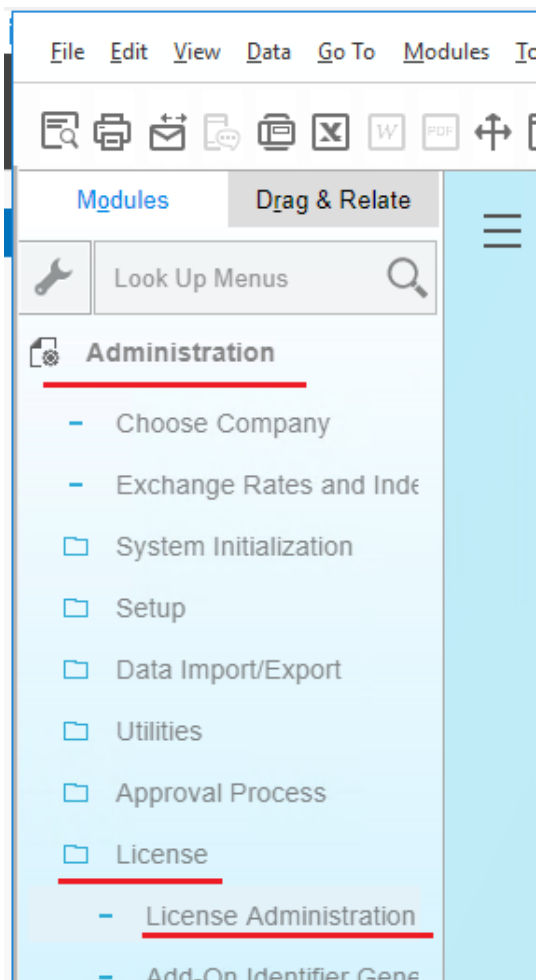


www.consensusintl.com
support@consensusintl.com | +1 786-206-0034

IMPORTING A NEW LICENSE FILE INTO SAP BUSINESS ONE

1.

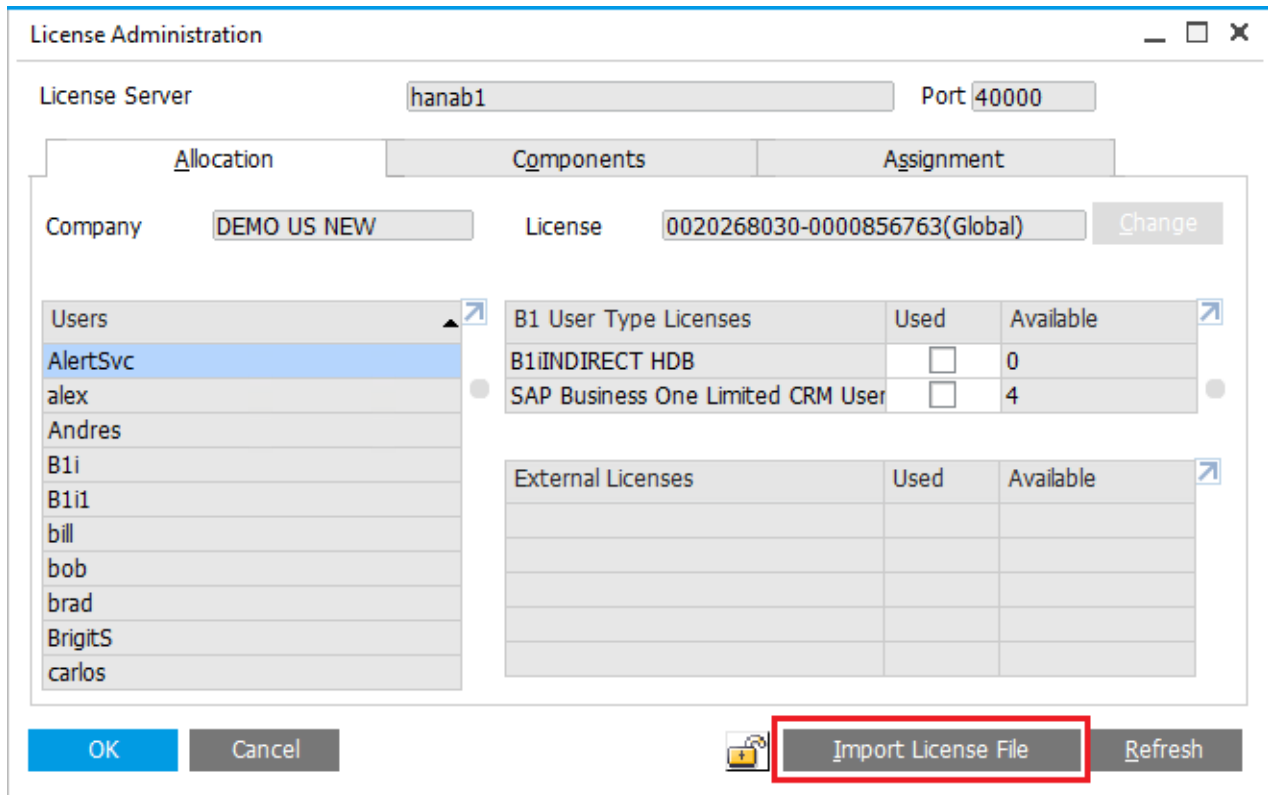
Open the license Administration windows from Modules -> Administration -> License -> License Administration



IMPORTING A NEW LICENSE FILE INTO SAP BUSINESS ONE

2.

On the license administration window select the button “Import License File” as bellow:



Once the file is selected the new licenses are made available. There is no confirmation message. This applies only for customers with its own environment.

For customers on multitenant environments the licenses are applied by Consensus.